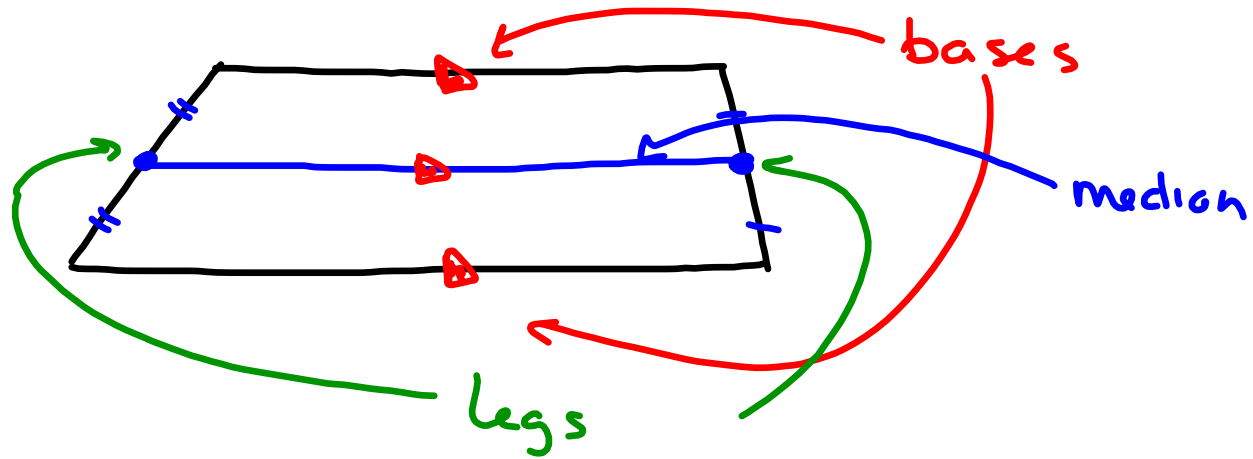


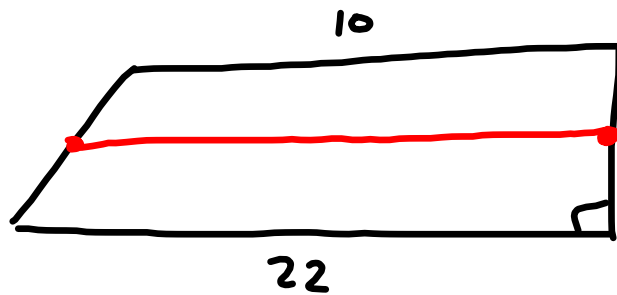
Section 6-6 Trapezoids

Obj: Recognize the properties of a trapezoid.



Isosceles Trapezoid

- 1) Legs are congruent
- 2)

Median of a Trapezoid

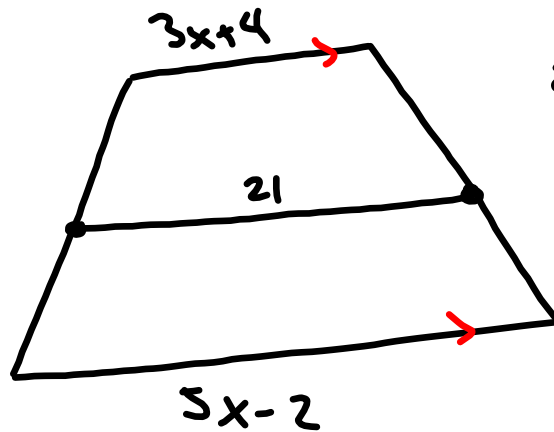
$$\text{Median} = \frac{1}{2}(b_1 + b_2)$$

$$\text{Median} = 16$$

pg 296

2, 3 → Find 5 examples

10-26 all, 34



$$21 = \frac{1}{2}(3x+4 + 5x-2)$$

$$21 = \frac{1}{2}(8x+2)$$

$$21 = 4x+1$$

$$20 = 4x$$

$$5 = x$$